



특징 Feature

- AP-566-1: SEMI S8-0218(SESC6.9) 클린룸용 장갑 착용시 대응(2018년도판)
- AP-566-2: SEMI S8-0701(SESC6.9)대응(2001년도판)
- 내약품성을 고려하여 염화비닐 수지(무연)를 사용
- 염화비닐 용접에도 나사 고정에도 대응 가능합니다.
- 돌기가 적고 평평한 외관을 유지합니다.
- 큰 개구부로 조작성 뛰어납니다.
- AP-566-1: Compliant with SEMI S8-0218 (SESC 6.9) (2018 edition) when wearing clean room gloves
- AP-566-2: Compliant with SEMI S8-0701 (SESC 6.9) (2001 edition)
- In consideration of chemical resistance, vinyl chloride resin (lead-free) is used.
- Compatible with vinyl chloride welding and screw clamping.
- Maintains flat appearance with few protrusions.
- Large opening enables easy operation.

사양	<ul style="list-style-type: none"> <li>● 재질: 염화비닐 수지(PVC)</li> <li>● 표준색: 투명·아이보리</li> <li>● 부속품: 고정 와셔·부착 나사(스텐레스제)</li> <li>● 적용 판 두께: 1.0~8.0mm(패널 측에서 부착시)</li> </ul>
용도	● 반도체 제조장치·FPD 제조장치
비고	● 풀림 방지제 등 용제를 사용할 때는 충분한 검증을 실시하십시오.

Specifications	<ul style="list-style-type: none"> <li>● Material: Vinyl chloride resin (PVC)</li> <li>● Standard colors: Clear, ivory</li> <li>● Accessories: Fixed washer, attaching</li> <li>● Applicable sheet thickness: 1.0~8.0mm (when fitted from panel side)</li> </ul>
Specific-use	● Semiconductor manufacturing equipment, FPD manufacturing equipment
Remarks	● Be sure to test adequately when using a solvent such as thread-locking fluid.

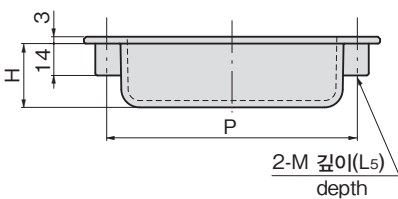
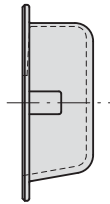
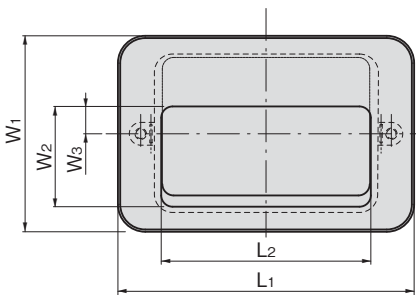
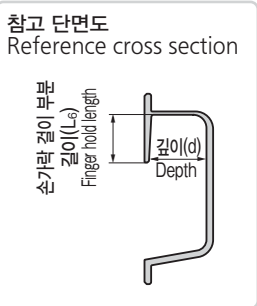
※SEMI S8(반도체 제조장치의 인간공학 엔지니어링에 대한 안전 가이드라인)은 서플라이어 인간공학(SESC) 조건을 만족한 제품입니다.  
 ※SEMI S8 (Safety Guidelines for Ergonomics / Human Factors Engineering Of Semiconductor Manufacturing Equipment) designates products that meet Supplier Ergonomics Success Criteria (SESC) requirements.



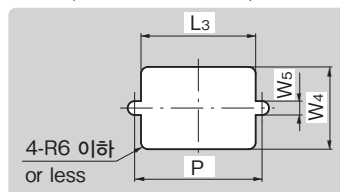
AP-566-1-Ivory  
아이보리



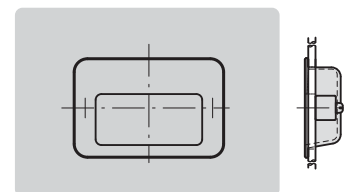
AP-566-1-Clear  
투명



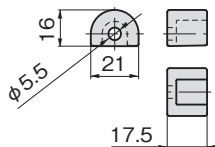
■패널면 앞쪽으로부터 부착 시의 패널 구멍(나사 고정용)  
Panel drilling dimensions from panel front (To secure the screws)



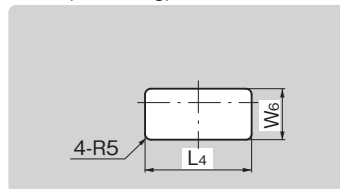
■패널면 앞쪽으로부터 부착하는 방법  
How to install from panel front



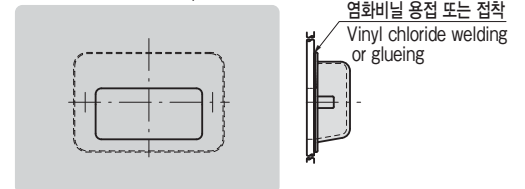
[고정 와셔]  
Base



■패널면 뒷쪽으로부터 부착 시의 패널 구멍(또는 용접 부착)  
Panel drilling dimensions from panel back (Or welding)



■패널면 뒷쪽으로부터 부착하는 방법  
How to install from panel back



상품명 Product No.	RoHS 10	L1	L2	L3	L4	L5	(L6)	W1	W2	W3	W4	W5	W6	H	P	(d)	M	제품질량(g) Mass	코드 Code
AP-566-1-Clear	●	130	92	99	92	10	21	86	44	12	71	12	44	28	110	25	M5	98	04209
AP-566-1-Ivory	●	130	92	99	92	10	21	86	44	12	71	12	44	28	110	25	M5	98	04210
AP-566-2-Clear	●	118	91	95	91	12	19	58	26	3.5	48	11	26	21.5	104	19	M4	44	04278
AP-566-2-Ivory	●	118	91	95	91	12	19	58	26	3.5	48	11	26	21.5	104	19	M4	44	04277

●: RoHS10 대응품 ▲: RoHS10에 대응 가능합니다.