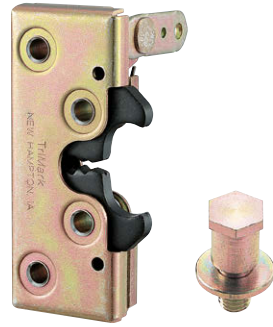


C-873-1-R
푸시 타입
Push type



C-873-2-R

특징 Feature

- 견고한 내진 구조입니다.
- 진동·충격이 심한 대형 도어에 최적입니다.
- 하프 록 기구 내장입니다.
- 우측용·좌측용(본 그림 및 사진은 모두 우측용입니다.)
- Rigid and vibration-proof structure.
- Ideal for large-size doors with severe vibration/shock.
- Designed with half-lock mechanism.
- For right-hand or left-hand use. (The photo and drawings show the right-hand use)

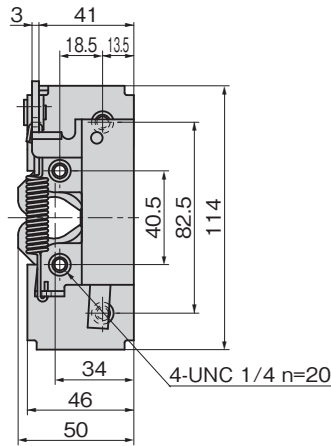
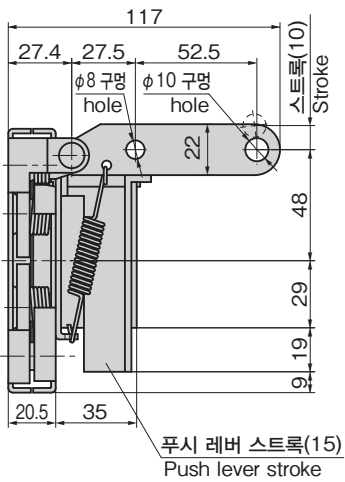
사양	● 재질: 냉간 압연 강판(SPCC)
	● 표면 마무리: 본체/아연 도금 크로메이트 처리(MFZn-C) 캠부/담금질 처리
용도	● 부속품: 스트라이커(C-873-1, 2 공통)
	● 특장차·건설기계·중기

Specifi-cations	● Material: Cold rolled steel plate (SPCC)
	● Finish: Main unit: Zinc plating chromate treatment (MFZn-C) Cams: Quenching
Specific-use	● Accessories: Striker (C-873-1/2 common)
	● Specially equipped vehicles, construction machinery, heavy machinery

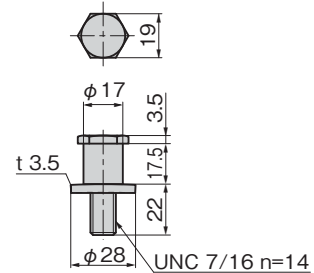
상품번호 Product No.	RoHS 10	제품질량(g) Mass	코드 Code
C-873-1-L	●	630	22688
C-873-1-R	●	630	22689
C-873-2-L	▲	420	22196
C-873-2-R	▲	420	22197

●: RoHS10 대응품
▲: RoHS10에 대응 가능합니다.

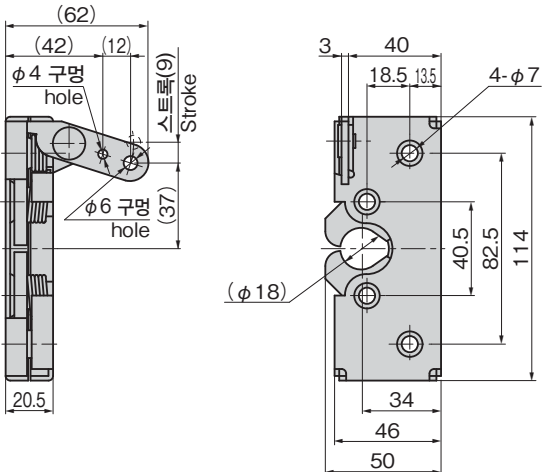
[C-873-1]



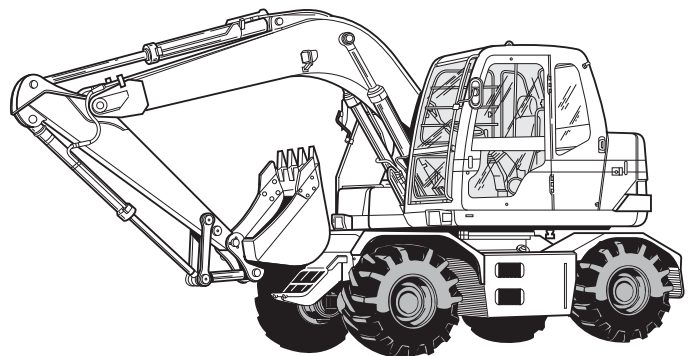
[스트라이커]
Striker



[C-873-2]



사용 예
Example of application



건설기계의 잠금 장치에 최적
Suitable for the lock mechanism for the construction machinery.