



C-1101-1



C-1101-2

특징 Feature

- C-1101-2는 래치를 가공하여 사용할 수 있습니다.
- 스텐레스제로 내식성이 뛰어납니다.
- C-1101-2 can be used after machining latch.
- Corrosion-resistant stainless steel is used.

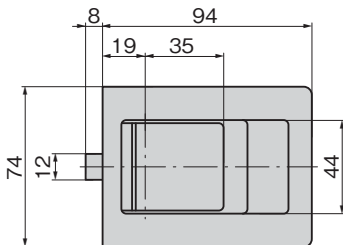
사양	● 재질: 본체/냉간 압연 스텐레스 강판(SUS304) 래치부/괘삭 황동인발봉(BsBD2)
용도	● 표면 마무리: 헤어 라인 마무리 ● 항공기(키친)·옥외용 분전반

Specifications	● Material: Main body: Cold rolled stainless steel plate (SUS304) Latch: Free-cutting brass drawn bar (BsBD2)
Specific use	● Finish: Hairline finish ● Aircraft (kitchens) and outdoor distribution boards

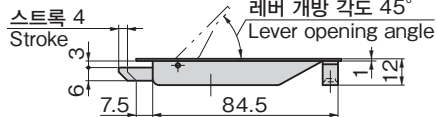
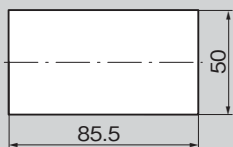
상품번호 Product No.	RoHS 10	제품질량(g) Mass	코드 Code
C-1101-1	●	190	20834
C-1101-2	●	78	20835

●: RoHS10 대응품 ▲: RoHS10에 대응 가능합니다.

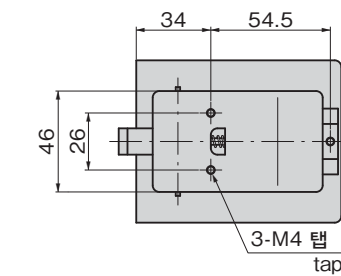
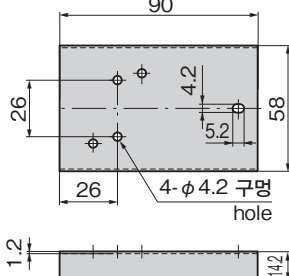
[C-1101-1]



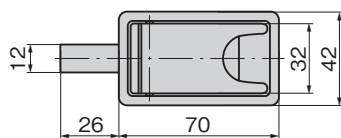
패널 구멍 치수
Panel drilling dimensions



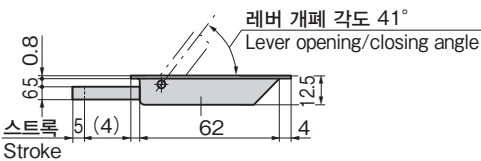
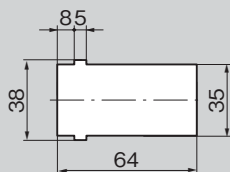
부착 보조판
Installation auxiliary plate



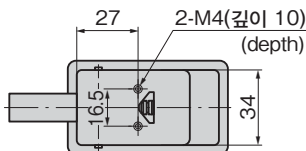
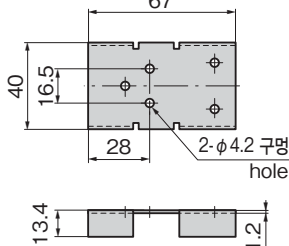
[C-1101-2]



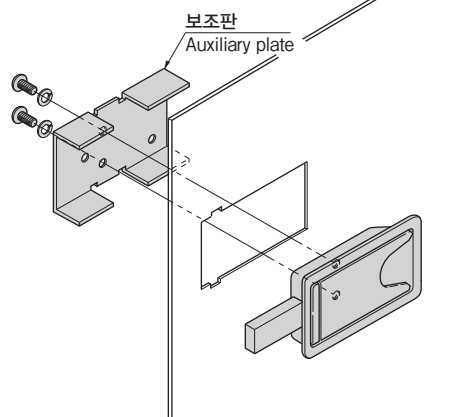
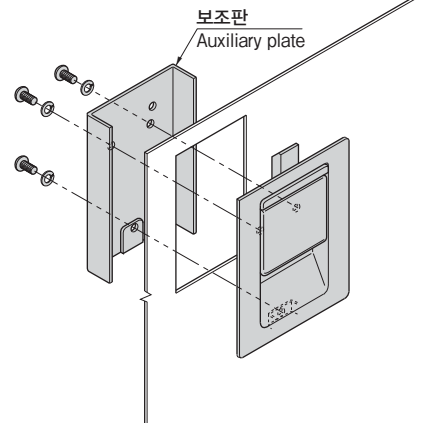
패널 구멍 치수
Panel drilling dimensions



부착 보조판
Installation auxiliary plate



부착 방법
Installation method



부착에는 보조판을 사용하십시오.
Use the auxiliary plate for installation.